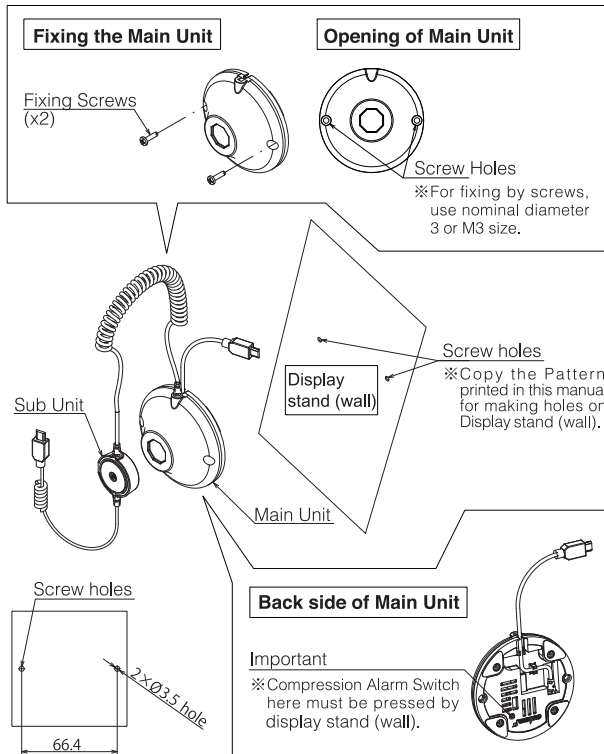


## How to Install (on display stand or wall) ①

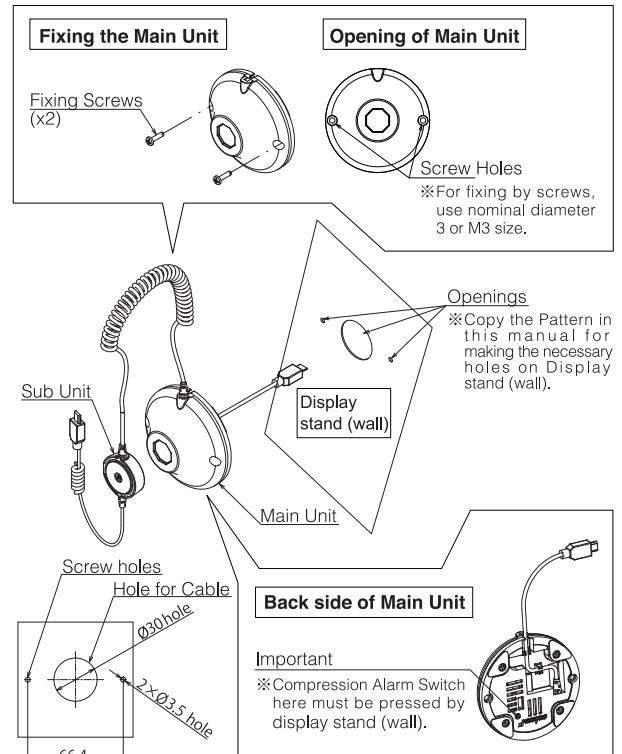
### ■ In case USB cable stays in front of display stand (wall)



- Copy the Pattern printed in this manual for making holes on Display stand (wall).
- The Fixing Screws are not included.
- AC Adaptor is not included.

## How to Install (on display stand or wall) ②

### ■ In case USB cable goes behind display stand (wall)

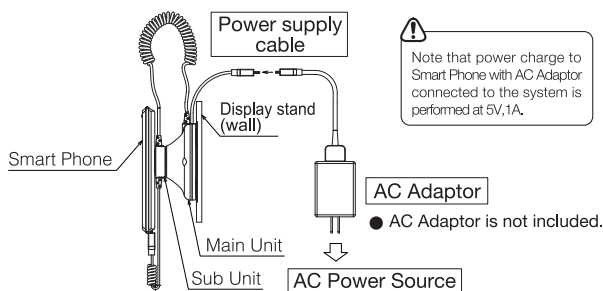


- Copy the Pattern printed in this manual for making holes on Display stand (wall).
- The Fixing Screws are not included.
- AC Adaptor is not included.

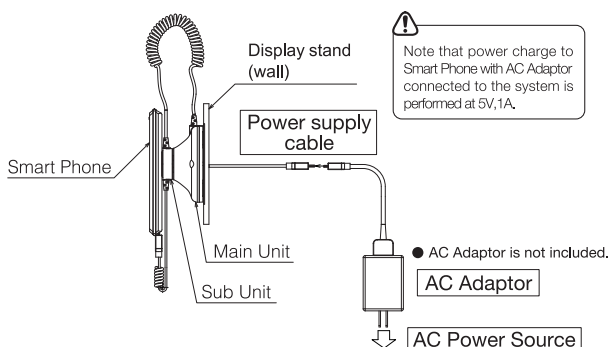
## Connection of USB Power Cable

### ■ In case USB cable stays in front of display stand (wall)

This equipment does not work if power supply is stopped. Pay special attention for connecting power supply cable firmly.



### ■ In case USB cable goes behind display stand (wall)

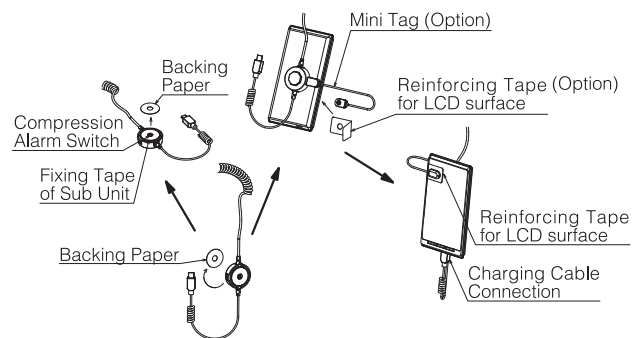


- Use only original AC Adaptor for displayed merchandise. Using other types of AC Adaptors may cause malfunction, trouble or fire.

## Installation on Merchandise

### ■ How to install Sub Unit on Merchandise

Remove Backing Paper of Sub Unit and fix it on the Merchandise firmly.



- Clean the fixing surface free from dirt, moisture and finger mark with soft cloth to avoid peeling off.
- Mini Tag is sold separately. Mini Tag is an attachment to prevent theft of SIM Card and Battery out of displayed merchandise by opening back cover.
- For placing Mini Tag (Option), be sure to apply Reinforcing Tape to avoid peeling off and operation failure.
- Check if Mini Tag (Option) is properly installed before Alarming mode is set up. Improper installation of Mini Tag may cause operation failure.

## Battery Installation (Remote Controller)

- ① Prepare 2 pieces of AAA size Alkaline Battery.
- ② Remove Battery Case Cover on the back side, and install Batteries.
- ③ Put the cover back.

